

Simple SiteMinder Guide

Web Applications Publications
Information Technology Services
State of Utah

Version 1.0

Index	Page 2
What is SiteMinder, and why should you use it?.....	Page 3
How does SiteMinder Work.....	Page 4
ITS SiteMinder Technical Layout	Page 5
9 Steps to using SiteMinder in your environment.....	Page 6
SiteMinder Login walk through	Page 7
SiteMinder Administration Applet & Rules Properties.....	Page 8
SiteMinder Policy setup.....	Page 9
SiteMinder Responses setup.....	Page 10

Why should SiteMinder be important to you?

If you have an intranet or plan to develop one, you will need provide a way to use the internet to deliver ubiquitous access to your policies and procedures, personnel and employment announcements and other "Agency centric" intranet information. The very best way to do this is to leverage NDS and provide your users the ability to login to your intranet using their same Novell ID and password.

What's involved?

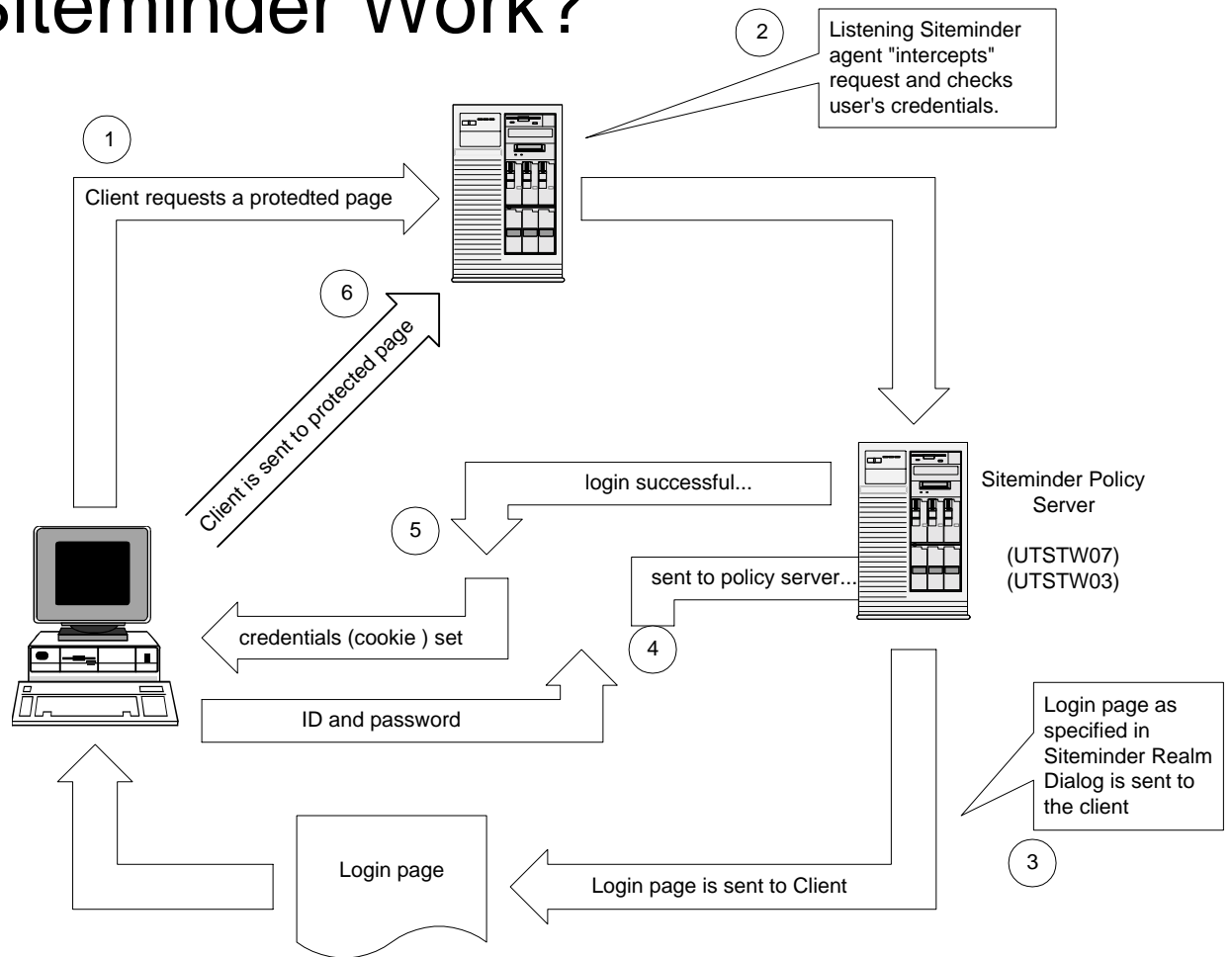
A small piece of software resides on your web server. It understands what pages are part of your intranet site(s) and intercepts url requests for them. These requests are held and a transaction is sent to a policy server that handles the authentication through LDAP to the NDS tree. The user is given a login page and asked for an ID and password. Once authenticated, the user's request for the protected intranet site / page is then sent back to the agency intranet web server.

Who controls the agent software?

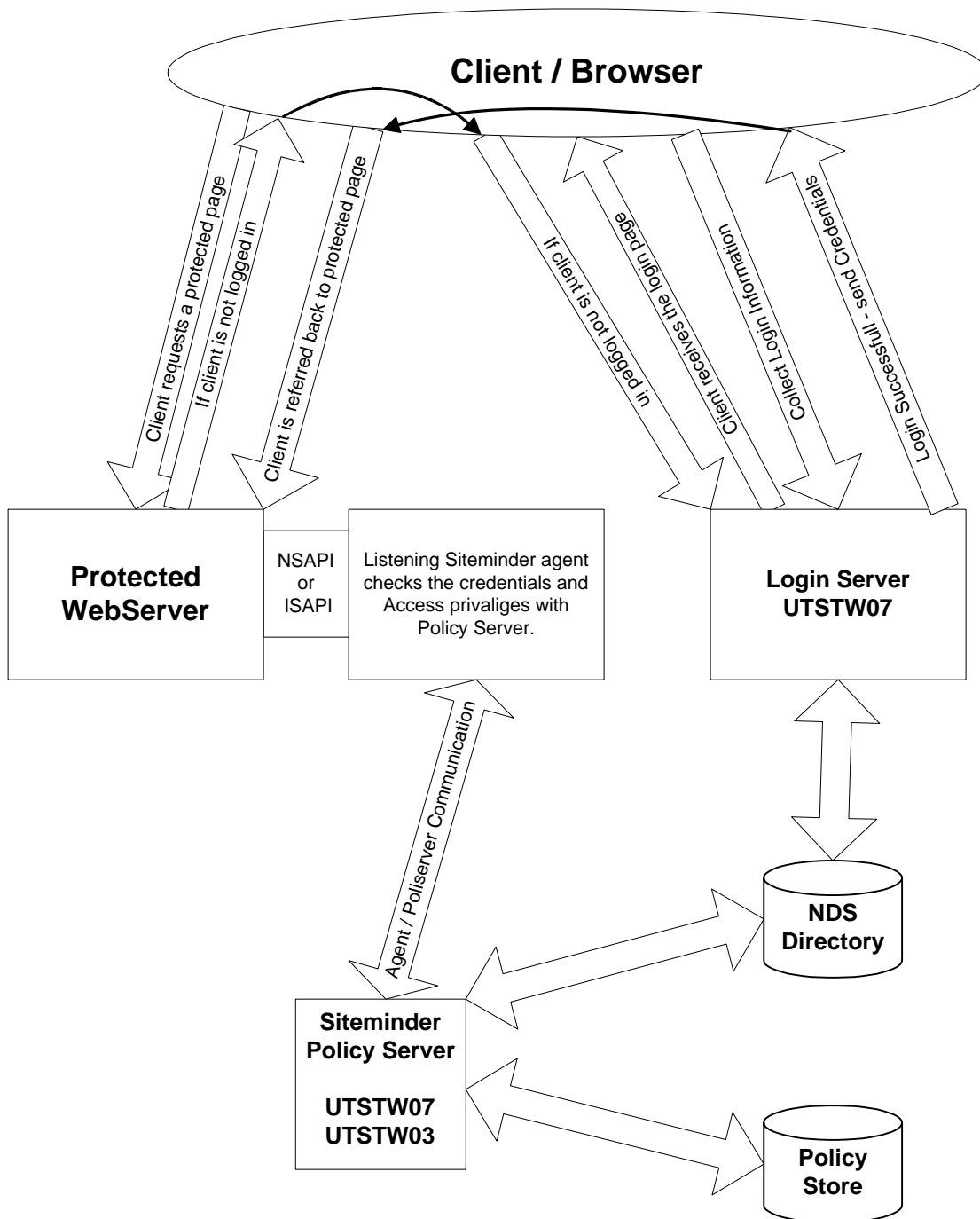
How is ITS involved?

The agency controls the rules and policies implemented by the agent and have administration rights to change it's behavior. ITS will assist you in setting up the agent that communicates with the policy server. ITS has no continuing involvement or control.

How does Siteminder Work?



Technical Layout



How to setup your site so it uses SiteMinder Security.

There are 9 Steps in this process. Prerequisites You must use IIS, or Netscape web servers. Are you protecting an existing web server that can't go down? If so skip to the second set of instructions.

1st Set of instructions

- Step 1. Obtain a copy of the Siteminder Agent.
- Step 2. Install your web server.
- Step 3. Publish your content to the web server.
- Step 4. Install your web agent.
- Step 5. Work with ITS to create the Agent, and Realm configuration.
- Step 6. Login to Siteminder.
- Step 6. Setup your rules.
- Step 7. Setup your policies.
- Step 8. Setup any responses required and associate them with rules in the policy.
- Step 9. Enable the Webagent.
 - Netscape: Edit the Webagent.conf
 - IIS: Use Siteminder agent Util.

2nd Set of instructions

- Step 1. Obtain a copy of the Siteminder Agent.
- Step 2. Create a new web server with a new IP address.
- Step 3. Publish your site to the web server.
- Step 4. Create an entry in your host file with a test name. Ie test.state.ut.us
- Step 5. Install your web agent.
- Step 6. Work with ITS to create the Agent, and Realm configuration.
- Step 7. Login to Siteminder.
- Step 8. Setup your rules.
- Step 9. Setup your policies.
- Step 10. Setup any responses required and associate them with rules in the policy.
- Step 11. Enable the Webagent.
 - Netscape: Edit the Webagent.conf
 - IIS: Use Siteminder agent Util.


SiteMinder admin URL <http://login2.innerweb.state.ut.us/Siteminder>

SiteMinder Microsoft Internet Explorer

File Edit View Favorites Tools Help

Back Forward Stop Search Favorites History Print Mail

Address <https://login.inneweb.state.tx.us/siteminder/>



SITEMINDER Version 3.6

[Administer SiteMinder](#)

[Netegrity Customer Service](#)

Select Administer Siteminder

Note Browser Compatibility Test.
If the applet does not come up
after 4 minutes come back to this
page and select Browser Compatibility test

[Browser compatibility test](#)

Copyright 1999 Netegrity, Inc. [All rights reserved](#)

SiteMinder Administration

Present your login name and password.

Please Login To
SITEMINDER

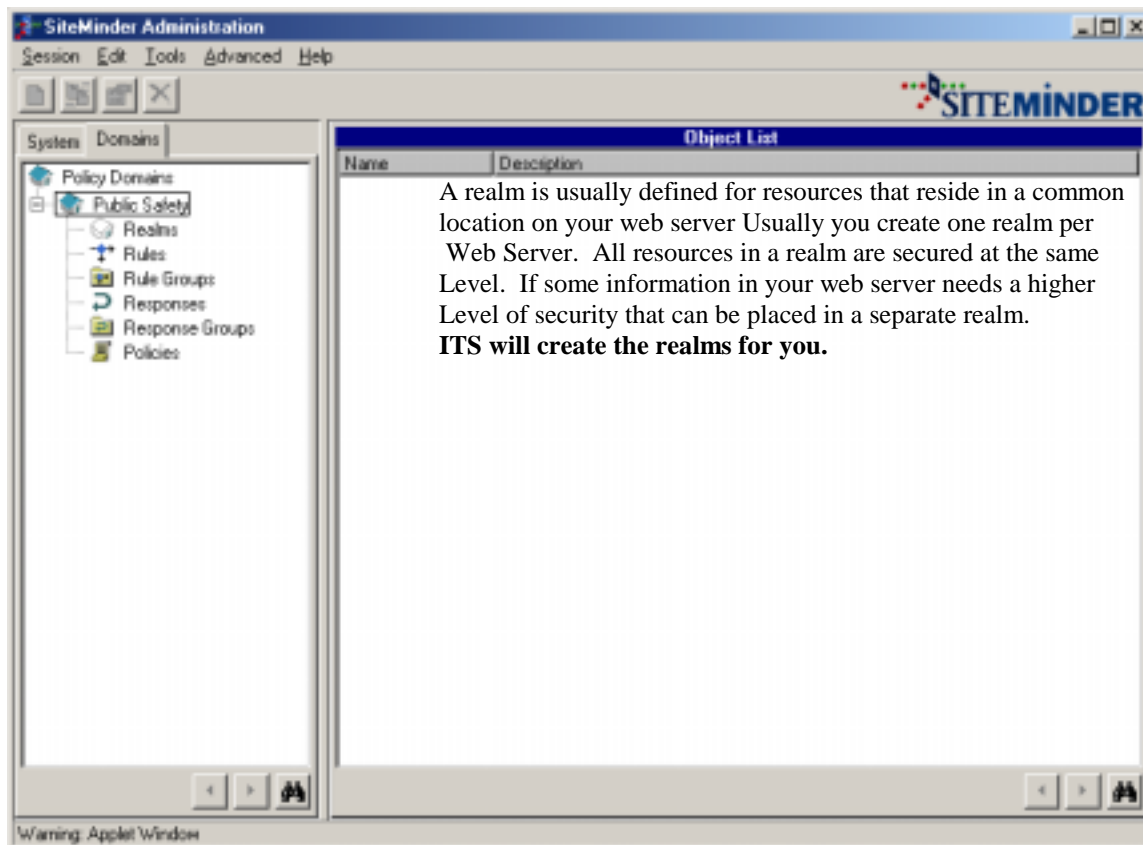
User name:

Password:

Login

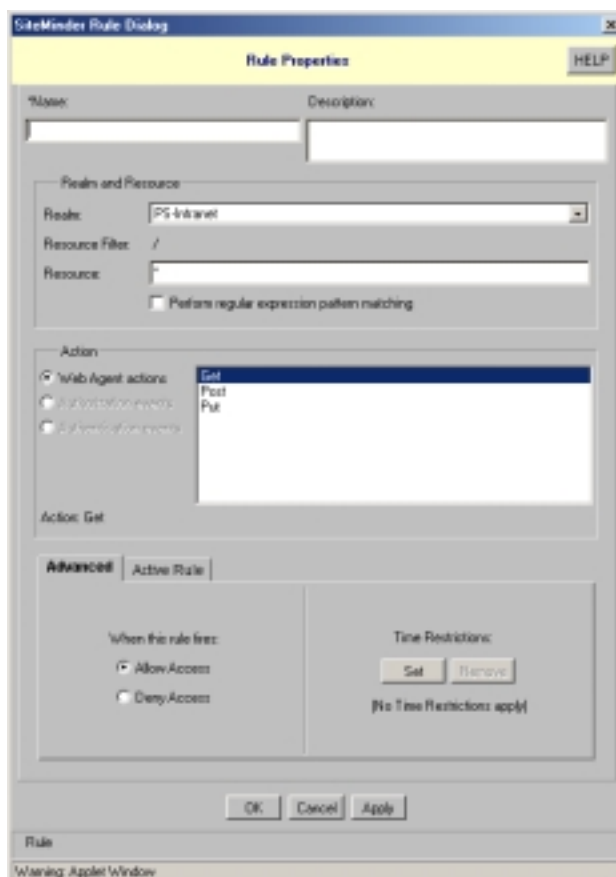
If you don't have a login to SiteMinder, please call
Doug Law @ 801-538-3495, or Dale Hicks @ 538-3417

Warning: Applet Window



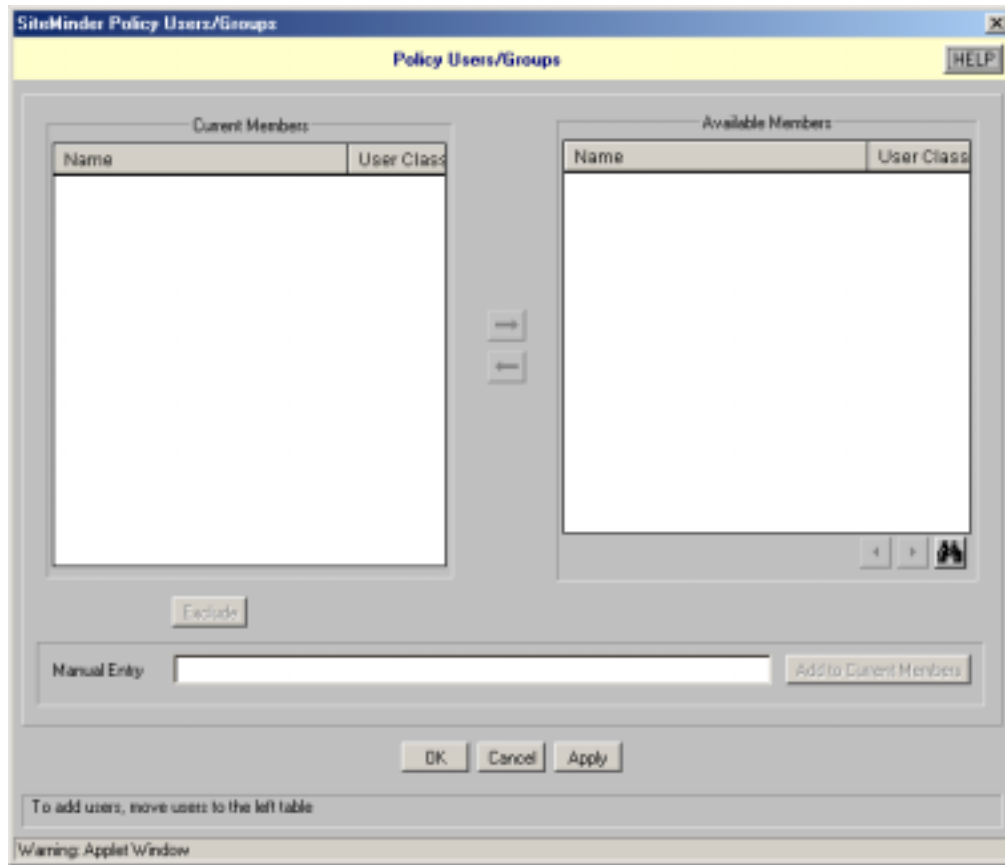
A realm is usually defined for resources that reside in a common location on your web server. Usually you create one realm per Web Server. All resources in a realm are secured at the same Level. If some information in your web server needs a higher Level of security that can be placed in a separate realm.
ITS will create the realms for you.

Create Rules that protect the URLs on your web Server



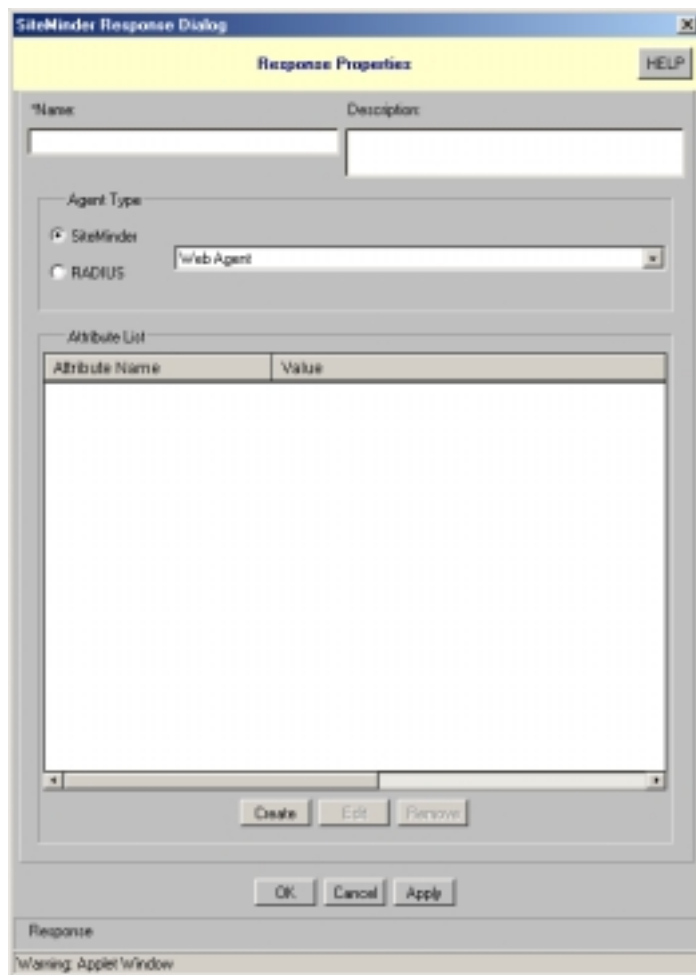
<- Resource is the URL Pattern. The Wildcard character is *

Create a Policy that associates Users with Rules



Manual Entry is used to enter User, OU, OrgRoles, or Group objects. The syntax is: Cn=object name,ou=container,ou=container,o=ut leave off the beginning cn part to specify a container object.

Responses can be created and associated with rules in a policy
Responses can return static information or LDAP information.
If your application is Java, We have a UserInfo class the will return all
LDAP information without using a response.



The image shows a 'SiteMinder Response Dialog' window. It has a title bar with 'SiteMinder Response Dialog' and a close button. Below the title bar is a yellow header area with the text 'Response Properties' and a 'HELP' button. The main area contains several fields and controls:

- 'Name:' and 'Description:' text boxes.
- 'Agent Type' section with two radio buttons: 'SiteMinder' (selected) and 'RADIUS'. To the right of the 'RADIUS' radio button is a dropdown menu showing 'Web Agent'.
- 'Attribute List' section with a table that has two columns: 'Attribute Name' and 'Value'. The table is currently empty.
- Below the table are three buttons: 'Create', 'Edit', and 'Remove'.
- At the bottom of the dialog are three buttons: 'OK', 'Cancel', and 'Apply'.
- At the very bottom, there is a 'Response' label and a text box containing 'Warning: Applet Window'.